

CONTEMPORARY TUBE MANUFACTURE

"EAT," EUROAUDIOTEAM

Abel Santoro, LU8DXI

This story began with the re-launching of manufacture of electron tubes in Central Europe since the early '90s. Production was oriented to the audio markets of Europe and the world.



Ms. Krahulkova

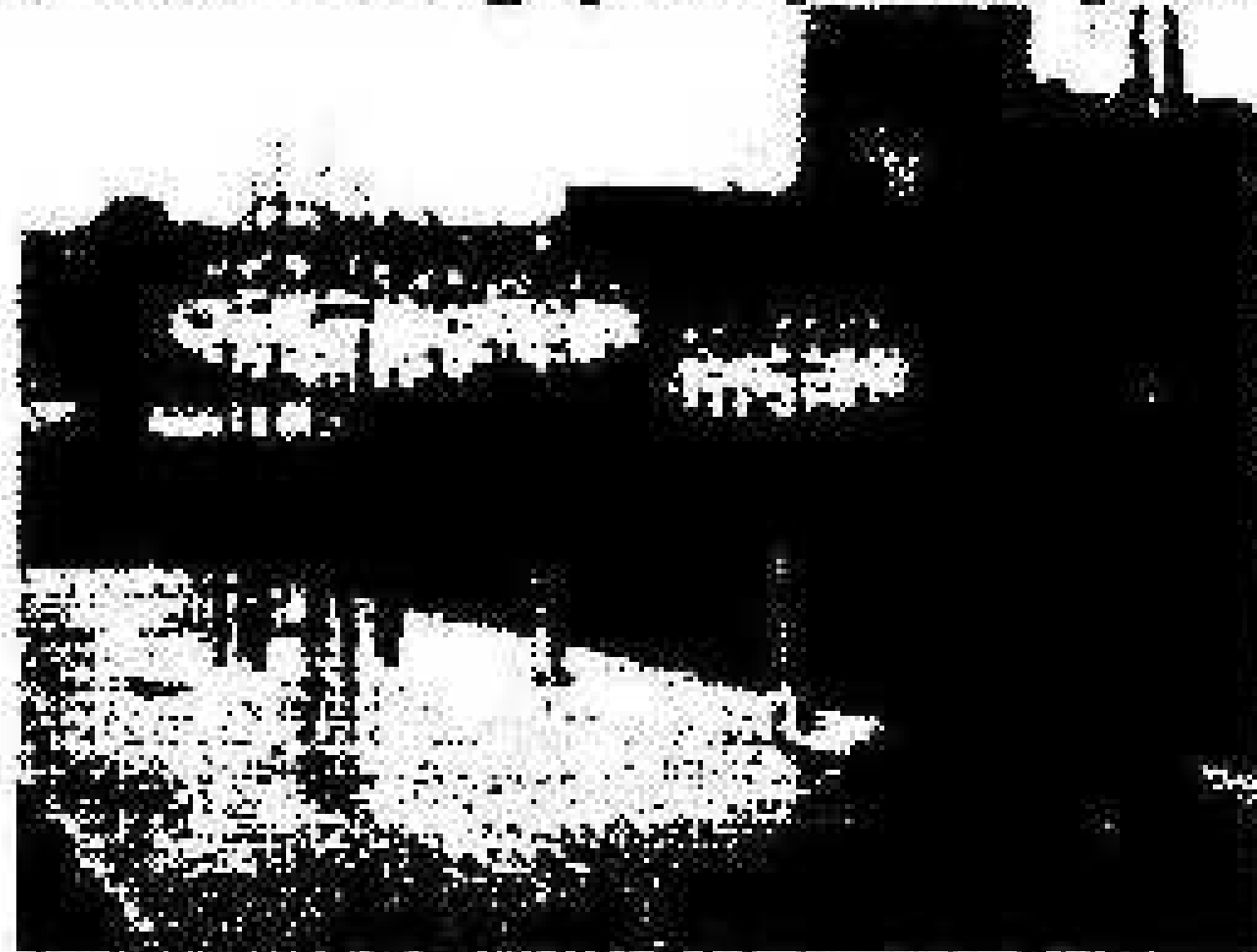
In this context there emerges the EuroAudioTeam, "EAT," an electron-tube factory located in Prague, in the Czech Republic. The factory is directed by Jozefina Krahulcova, founder and chief consultant, who is otherwise devoted to live concerts and opera. She had worked in the Tesla Vrsovice factory in Prague since 2001, as the main market strategist for their KT88 and 300B tubes.



Coated mica spacers in foreground

In 2006 Tesla was acquired by a new owner and moved out of Prague, at which point Ms. Krahulcova decided to buy a part of the Tesla Vrsovice tube factory, the sector specializing in transmitting tubes. She took over the technology, machinery, and technicians. These workers had high skills from years of making tubes. This was the beginning of EAT. The tubes they make today are the KT88, ECC803S (12AX7), ECC88 (6922 or 6DJ8), and 300B.

Every step in the manufacture of the tubes is tightly controlled, with great care and dedication from the technicians. The tubes are hand-made. Ms. Krahulcova wanted to produce the finest tubes available, ranking quality over quantity.



Button bases and a KT88 mount

The photos give a factory tour showing manufacture of the "Diamond" KT88 tube.



Mount with triple getters added

The EAT operation does not sell re-badged tubes - everything is made in its factory under meticulous specifications.

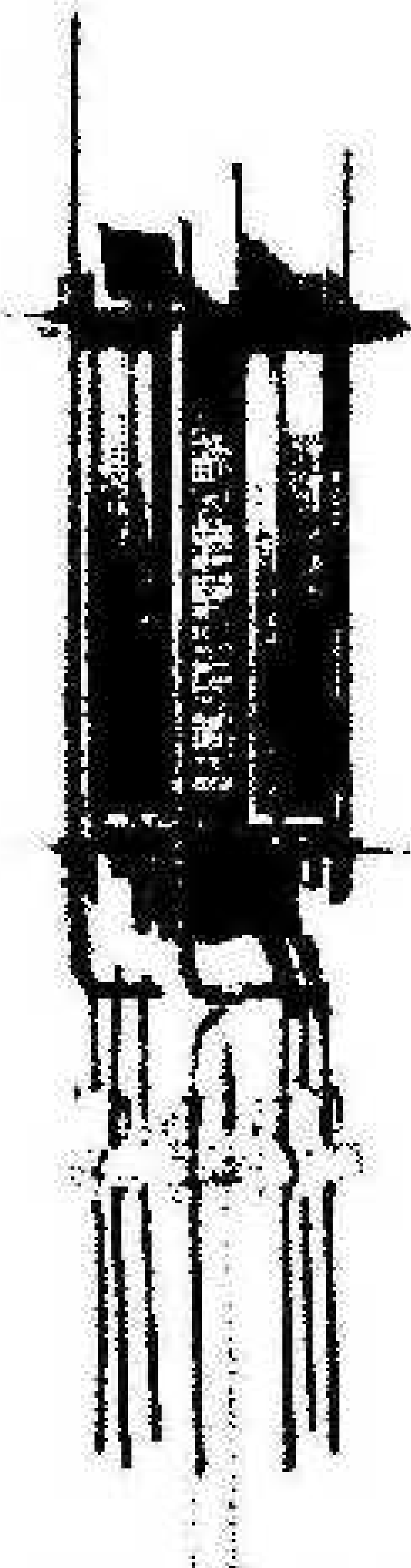
Jozefina Krahulcova believes that the extra time spent in the manufacture of each EAT tube results in a product which sounds better and with an improved life expectancy.

EuroAudioTeam is constantly present in international audio shows and has won awards in the audio-tube world.

ACKNOWLEDGEMENTS:

To Ms. Jozefina Krahulcova, owner of EuroAudioTeam, EAT.

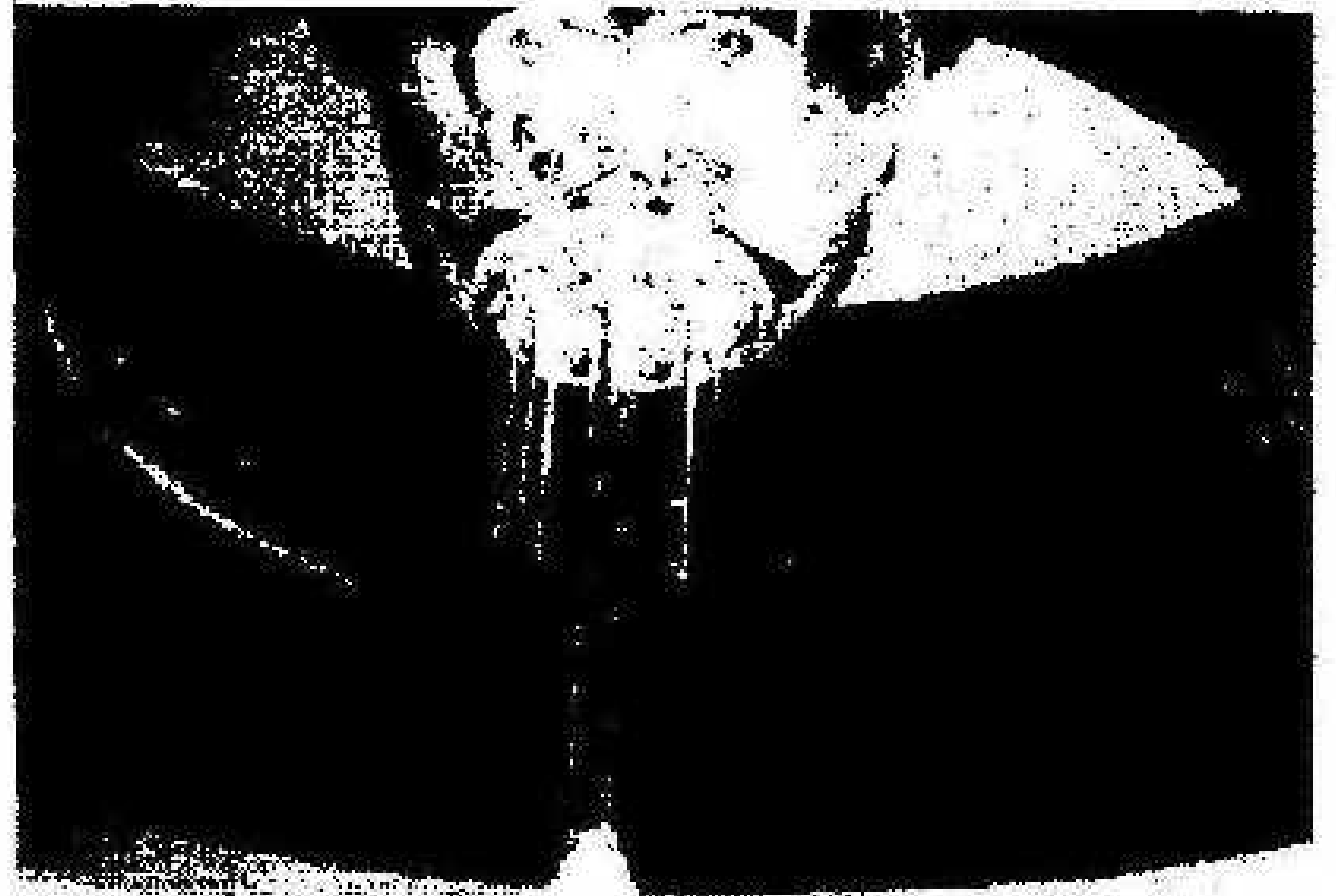
To Sixmoons Audio Magazine, www.6moons.com.



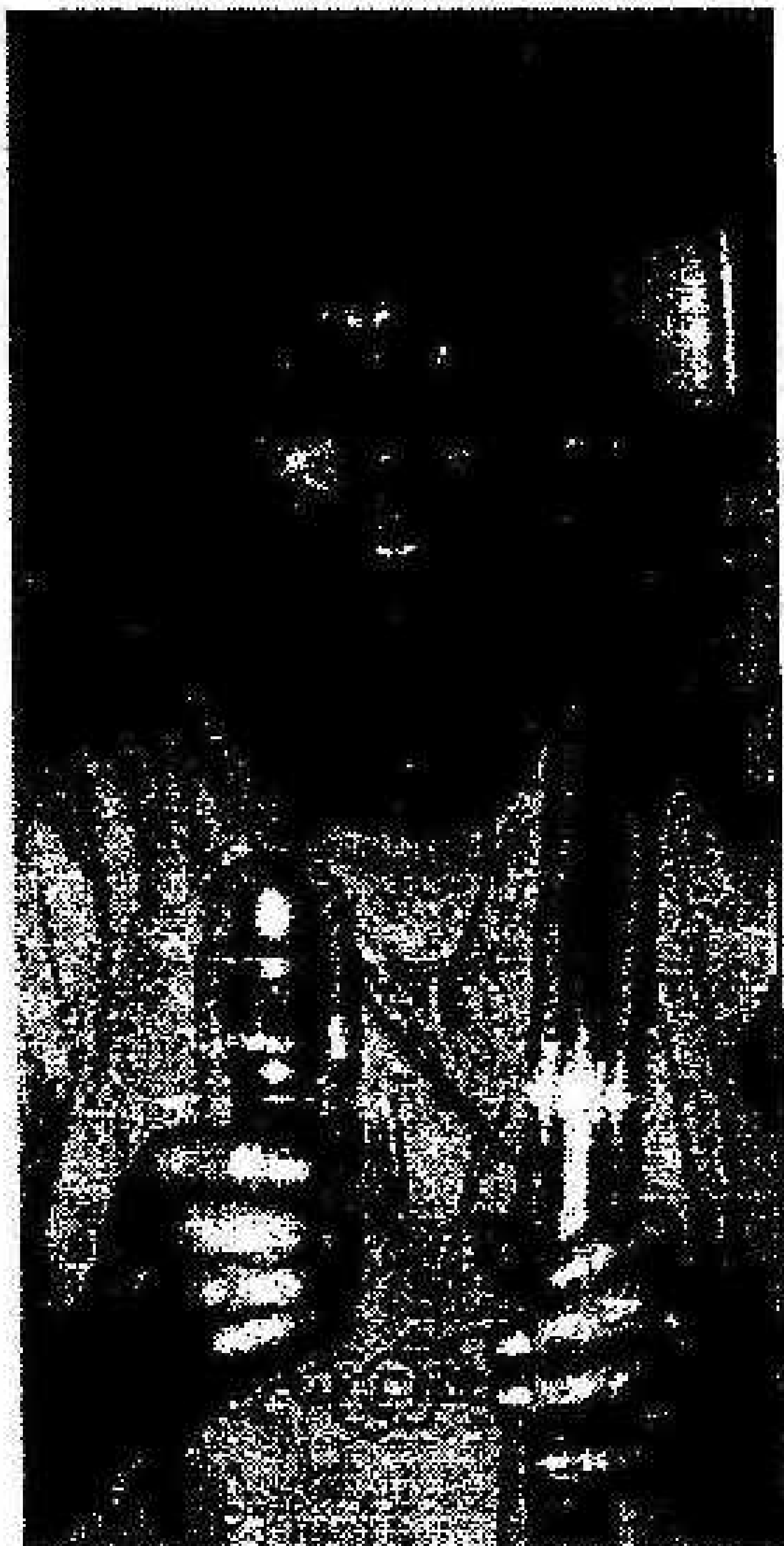
Mount welded to button base



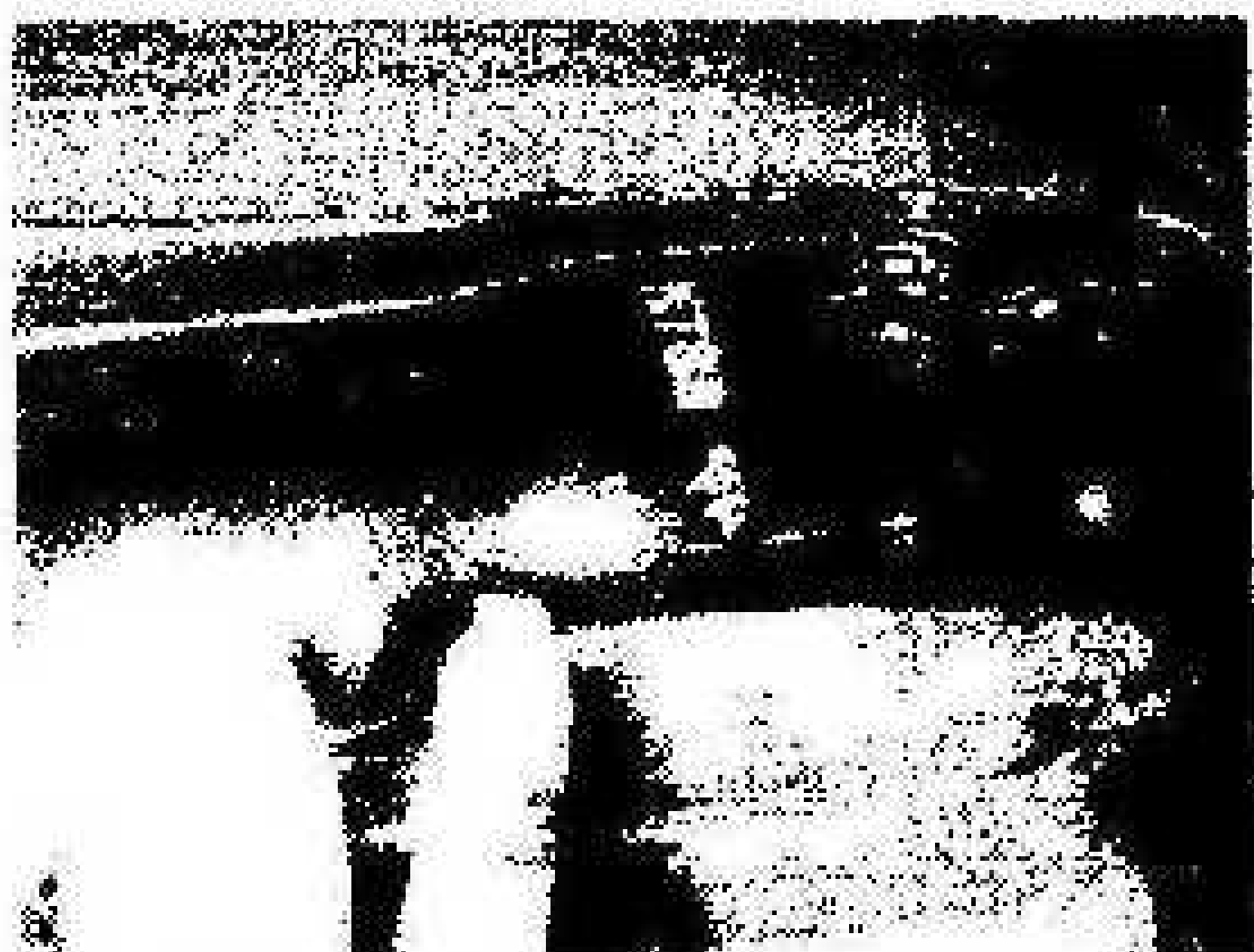
Oven for firing EAT logo onto bulbs



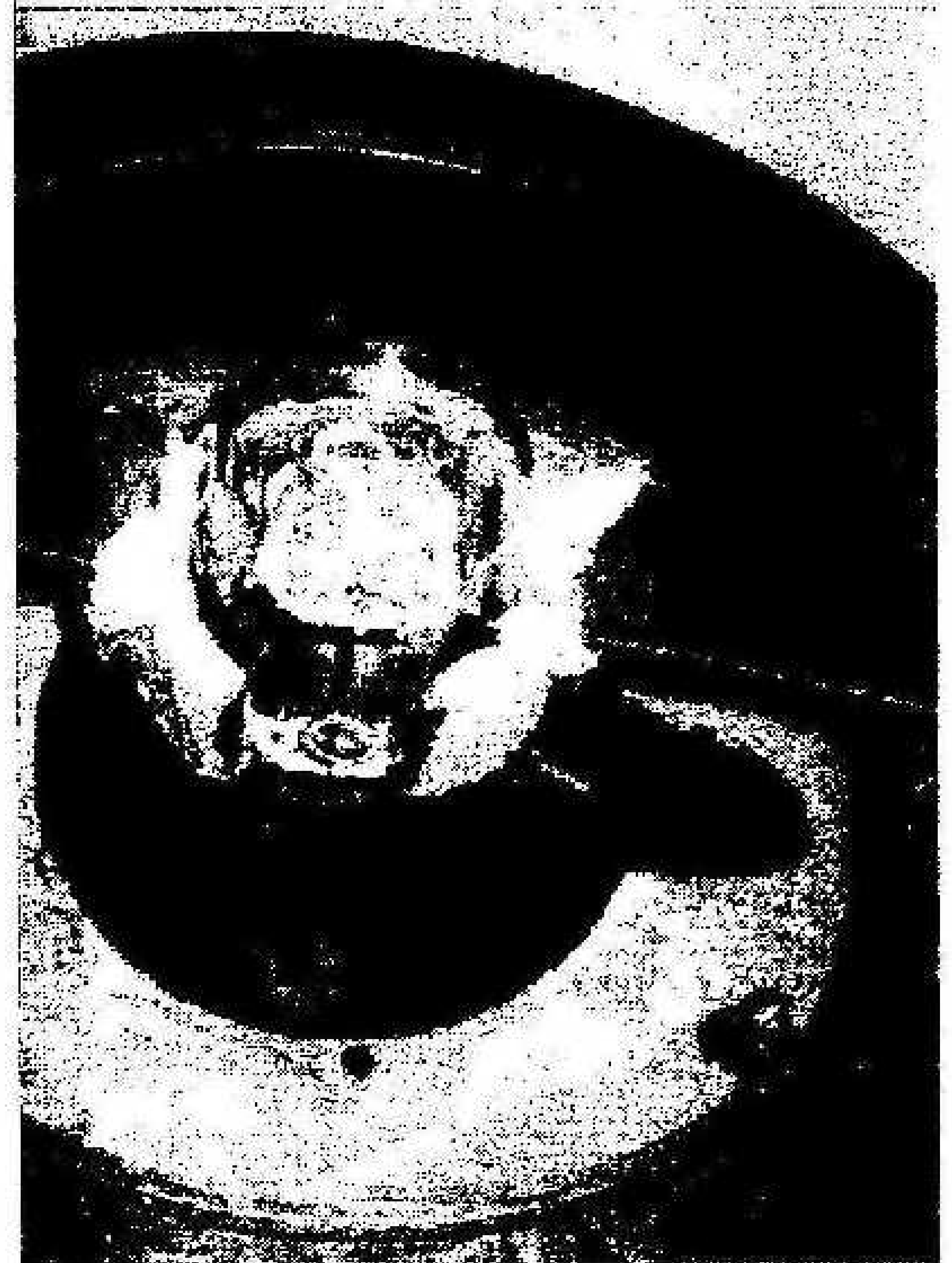
Exhaust tube sealed to the stem



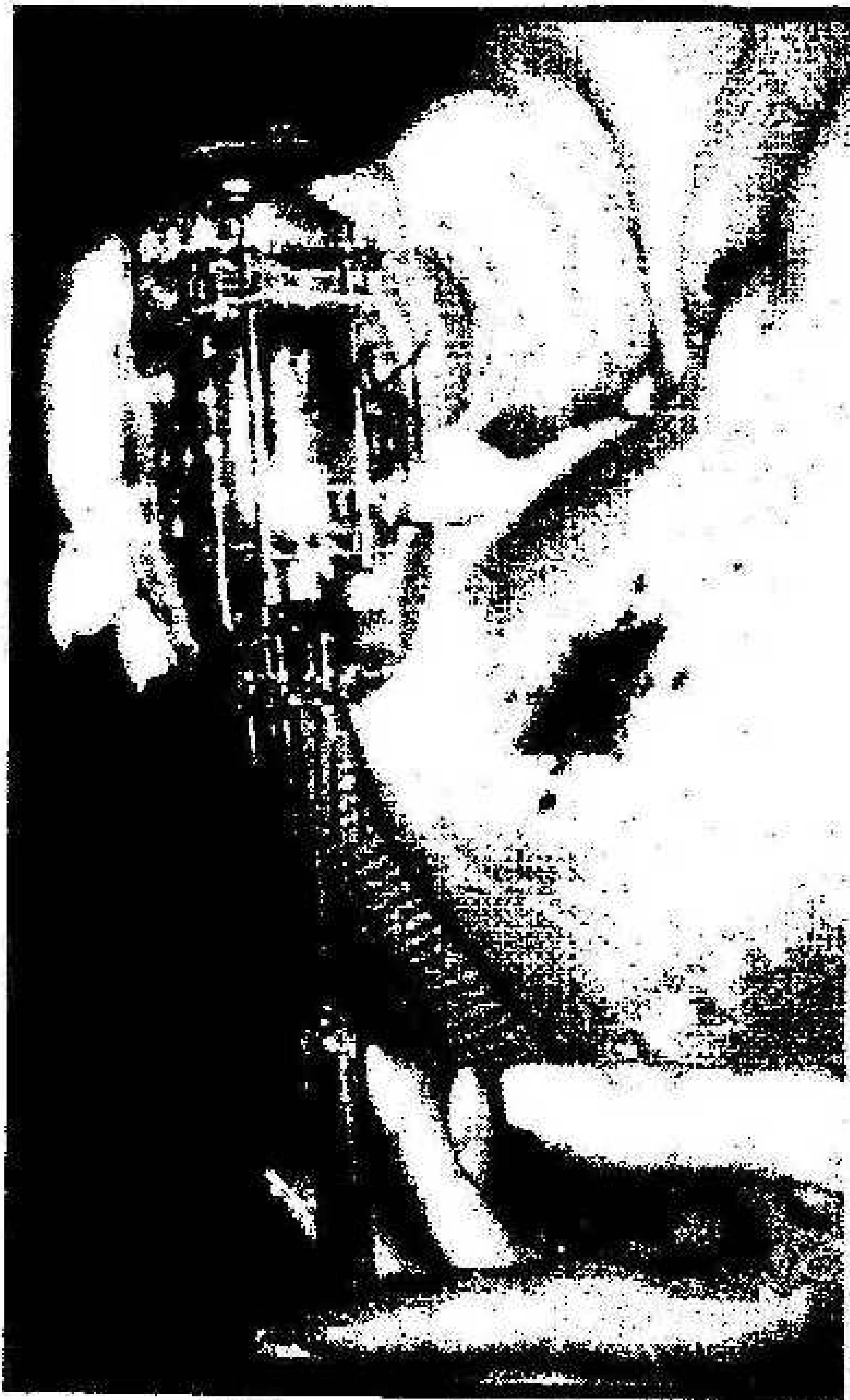
Glassblower and annealing specialist



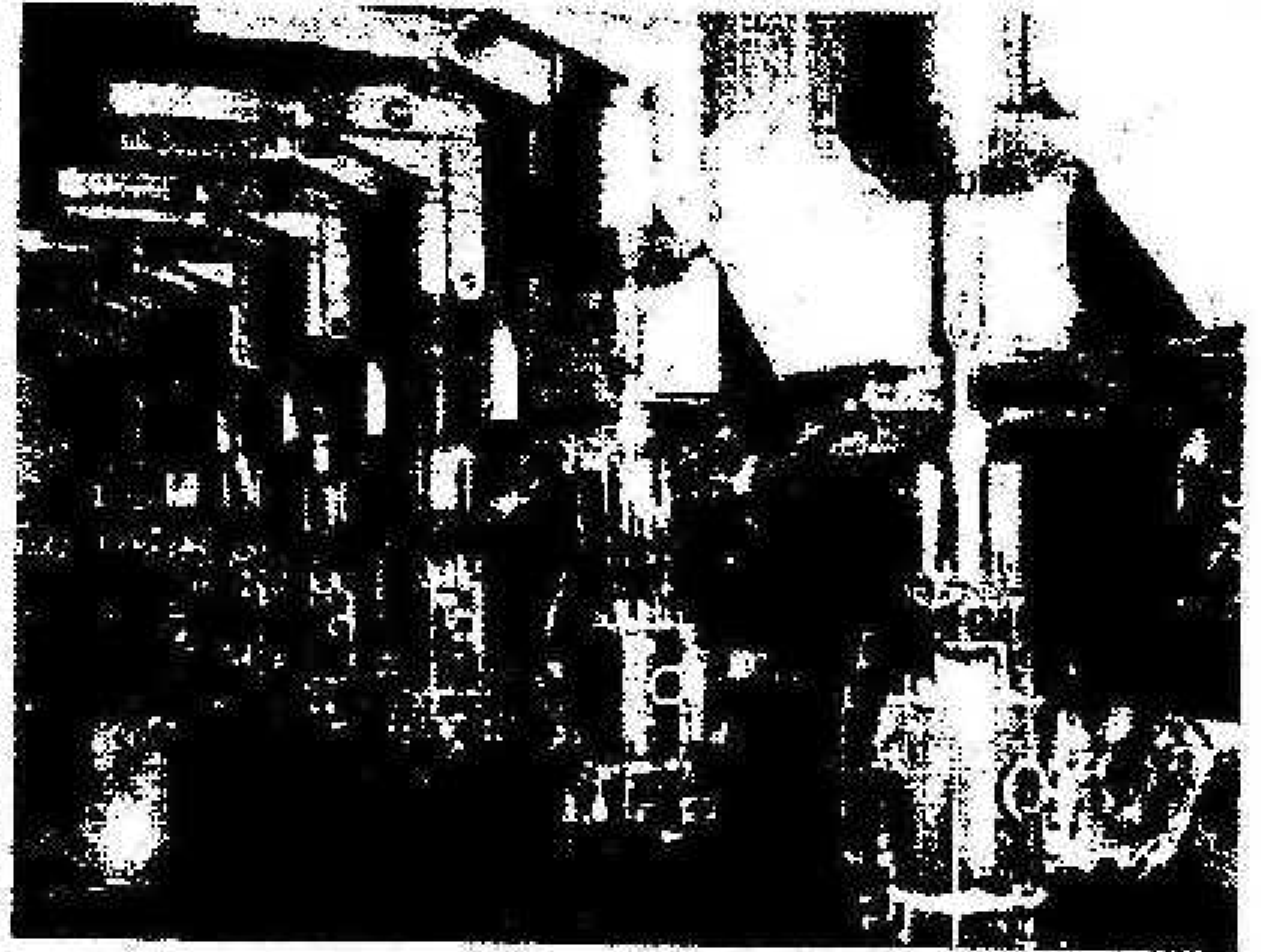
Branded "Diamond" KT88 bulb next to its forming mold



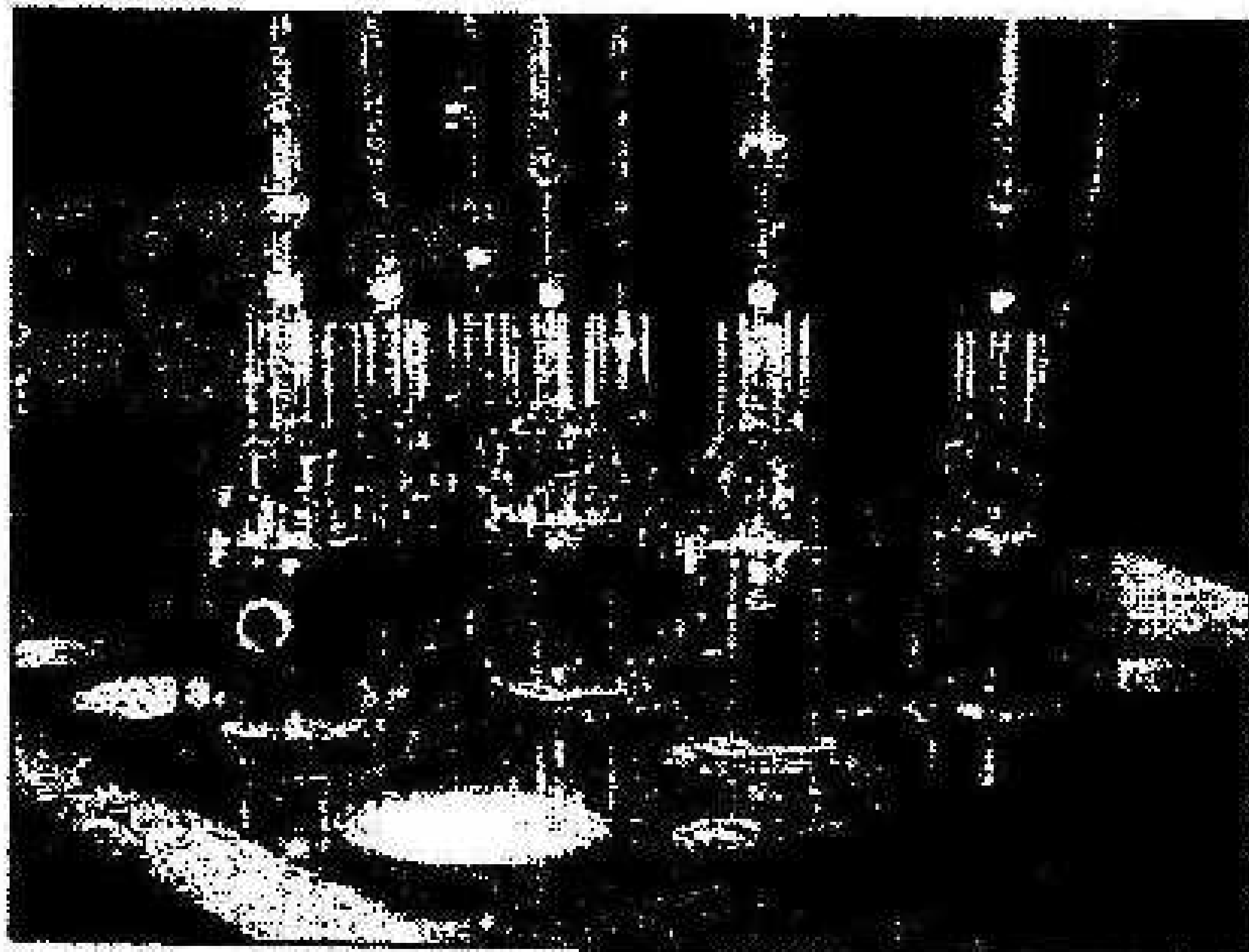
Sealing bulb to stem



Bulb sealed to stem



Ready for exhaust and tipping-off



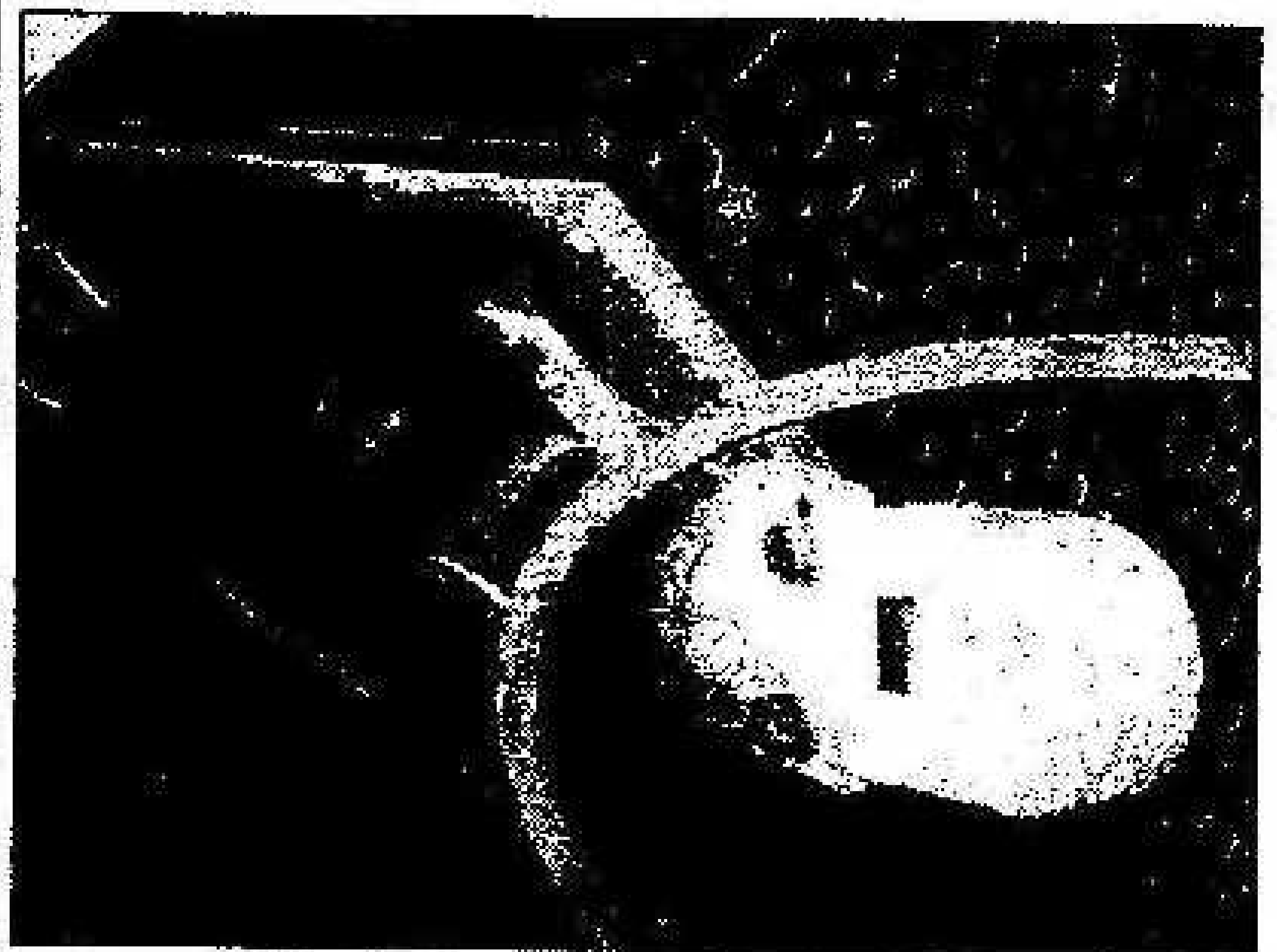
Tubes ready for evacuation



Vacuum- and getter-master



Swiss-made pumping system



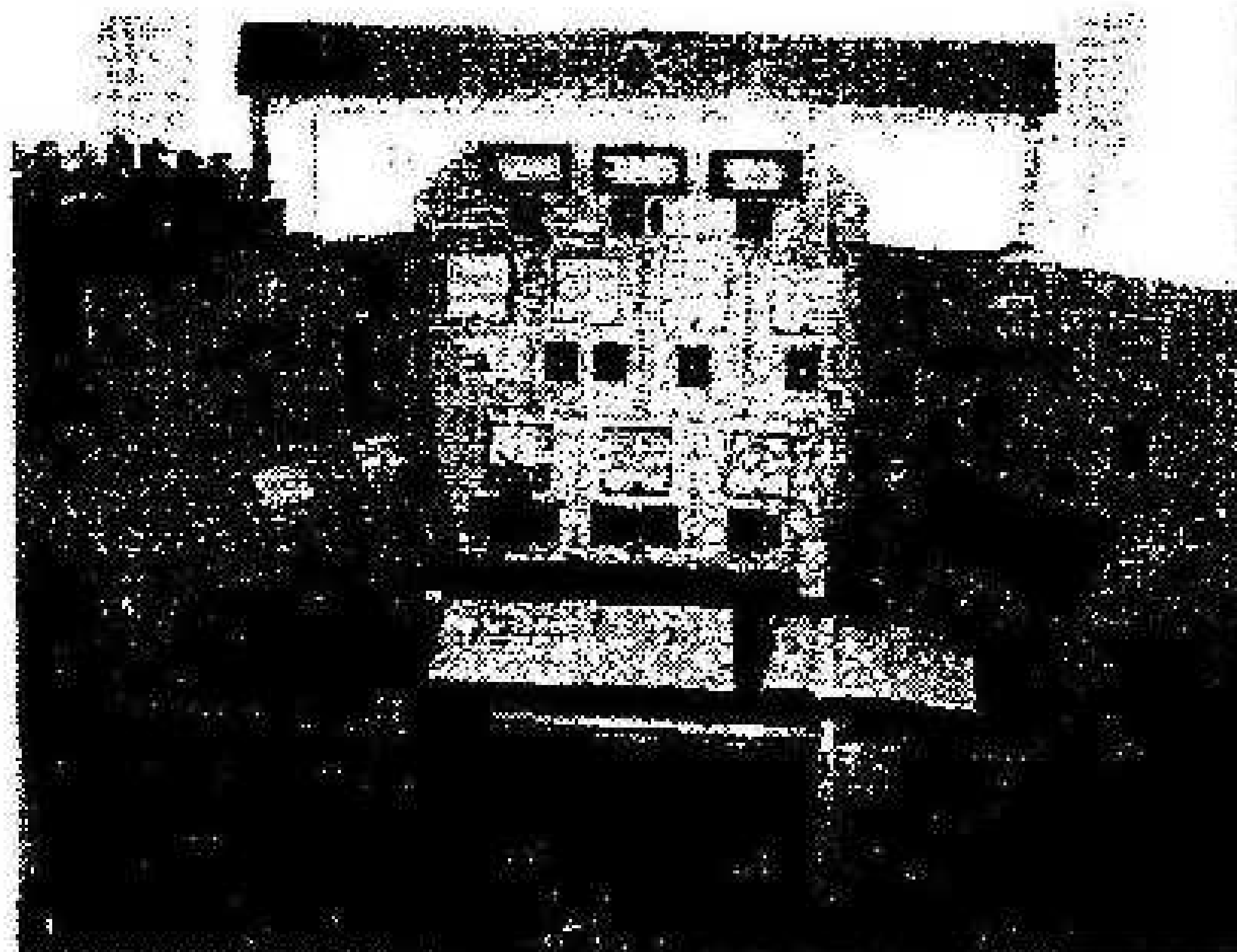
RF generator and flat-strip coil for flashing getters



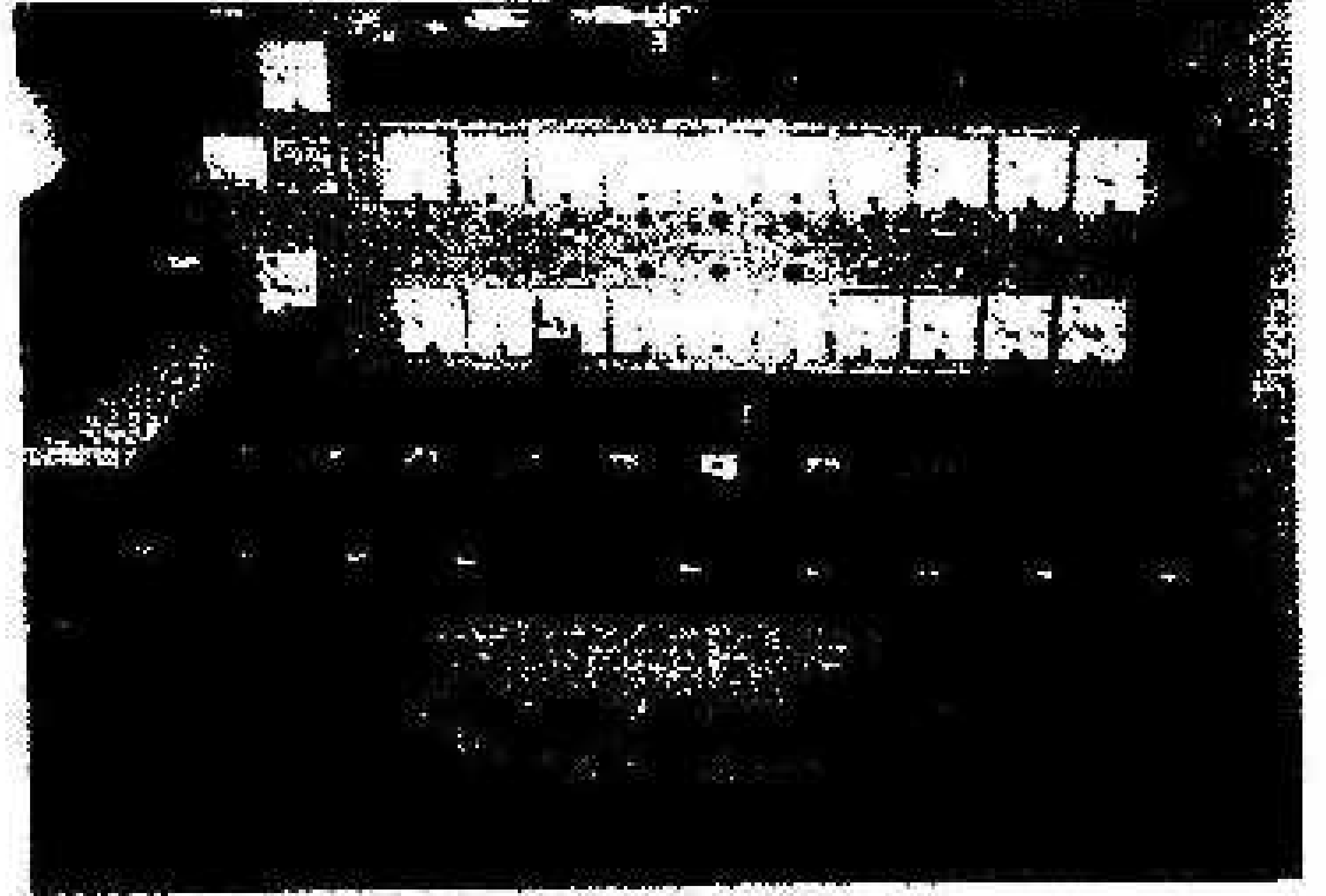
Flashing a getter with RF (note red-hot ring)



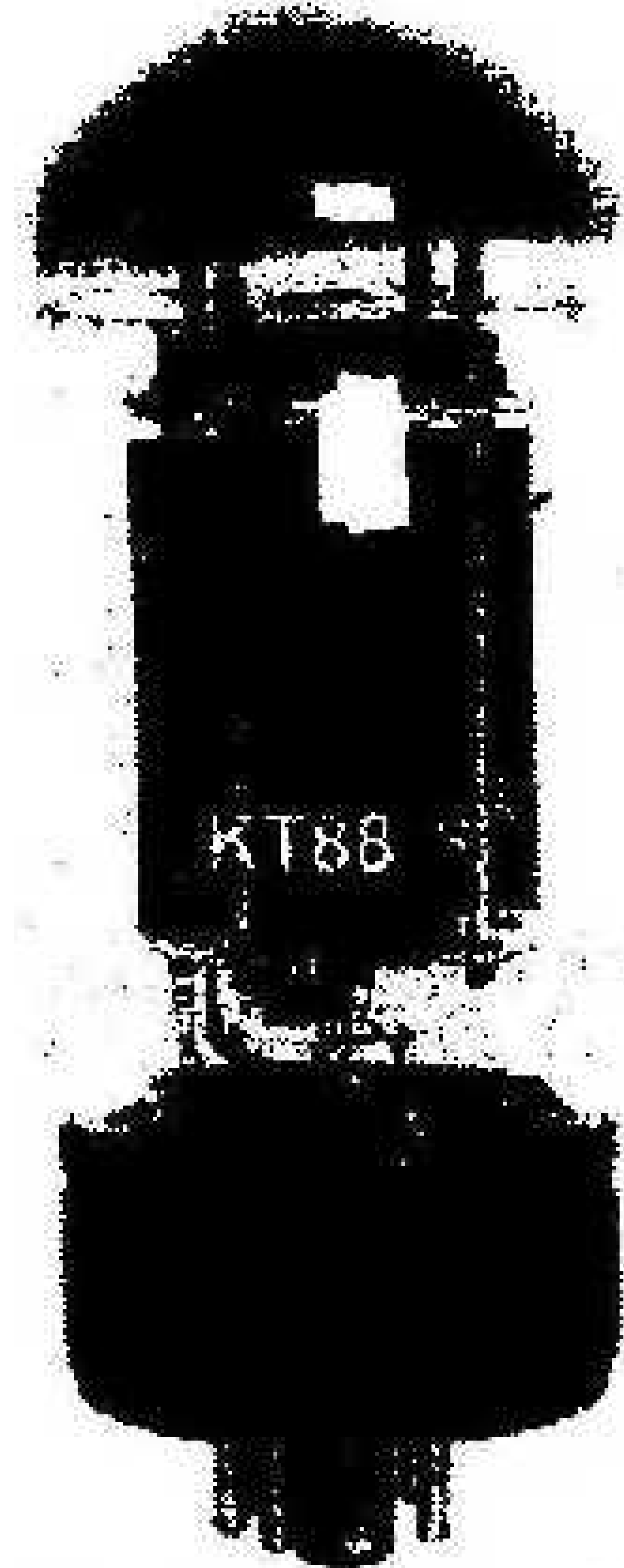
Tipping-off the exhausted tube



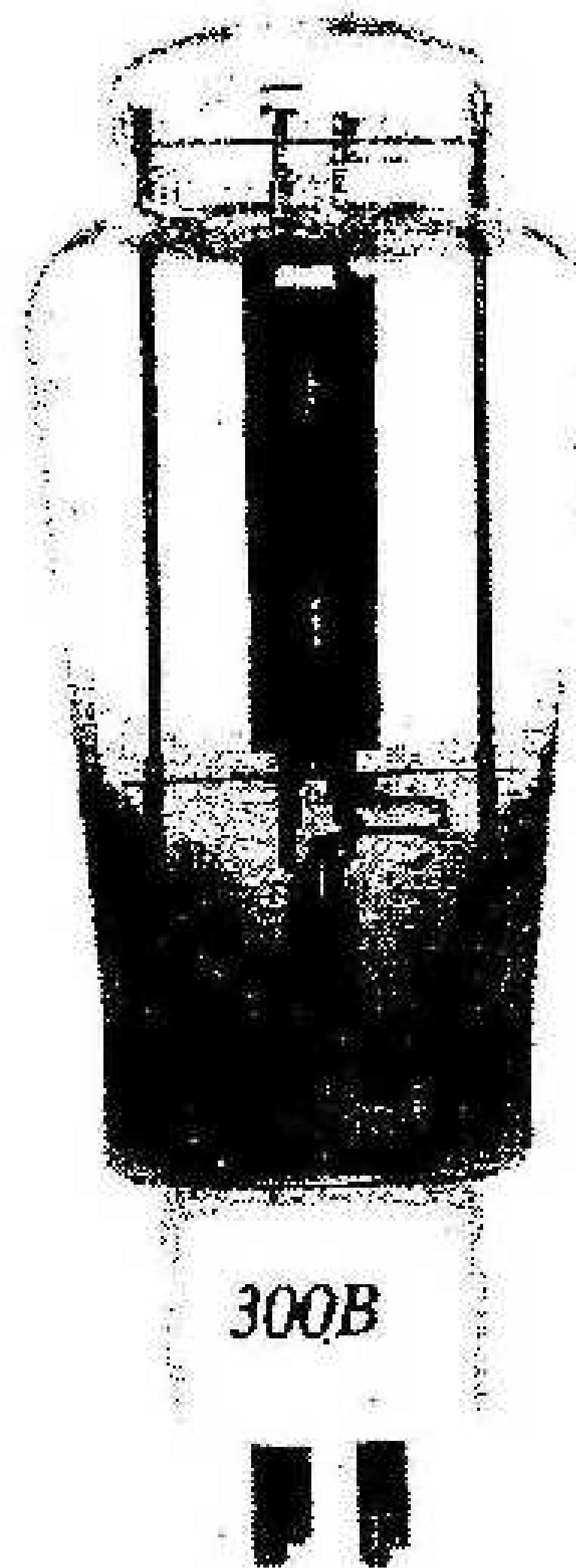
Multi-parameter test set



Ten-position ager



Finished "Diamond" KT88



EAT 300B